

## LIMITED WARRANTY

ICT Ltd. warrants to the original consumer purchaser that this product shall be in good working order, free from defects in materials and workmanship, for a period of one (1) year from the date of purchase. Should failure occur during the above stated time period, then ICT will, at its option, repair or replace this product at no additional charge except as set forth below. All parts, whether for repair or replacement, will be furnished on an exchange basis. All exchange pieces become the property of ICT. This limited warranty shall not apply if the ICT product has been damaged by unreasonable use, accident, negligence, disaster, service, or modification by anyone other than the ICT factory.

Limited warranty service is obtained by delivering the product during the above stated one (1) year warranty period to an authorized ICT dealer or ICT factory and providing proof of purchase date. If this product is delivered by mail, you will insure the product or assume risk of loss or damage in transit, and prepay shipping charges to the factory.

Every reasonable effort has been made to ensure that ICT product manuals and promotional materials accurately describe ICT product specifications and capabilities at the time of publication. However, because of ongoing improvements and updating of ICT products, ICT cannot guarantee the accuracy of printed materials after the date of publication and disclaims liability for changes, errors or omissions.

If this ICT product is not in good working order, as outlined in the above warranty, your sole remedy shall be repair or replacement as provided above. In no event will ICT be liable for any damages resulting from the use of or the inability to use the ICT product, even if an ICT employee or an authorized ICT dealer has been advised of the possibility of such damages, or for any claim by any other party.

ICT reserves the right to make changes without further notice to any products or documentation for improvement of reliability, function, or design.

ICT Ltd. does not recommend use of its products in life support applications wherein a failure or malfunction of the product may directly or indirectly threaten life or cause injury. The user of ICT products, which are to be used in life support applications as described above, assumes all risks of such use and indemnifies ICT against all damages.

Innovative Circuit Technology Ltd.

26921 Gloucester Way Langley, British Columbia, Canada V4W 3Y3

Tel.604.856.6303 Fax.604.856.6365 technical@ict-power.com www.ict-power.com

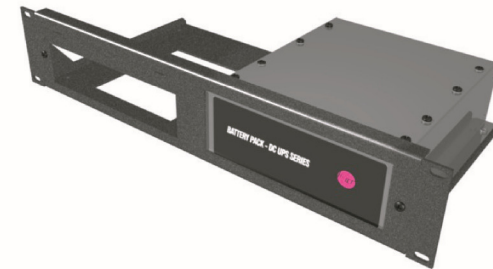


# BATTERY PACK - DC UPS SERIES

## INSTRUCTION MANUAL



BP



ICT12-14BP  
(shown mounted in ICT-RMK1)

**INNOVATIVE CIRCUIT TECHNOLOGY LTD.**

855-177-002

## BATTERY PACK - DC UPS SERIES

The DC UPS Battery Pack holds two standard size 12V 7.2AH UPS sealed lead acid batteries in a 12 Volt or 24 Volt configuration. The case has a DC terminal block and ATO type fuse for easy connection to ICT battery chargers and external loads. In the standalone configuration, the unit can be set on a horizontal surface with the supplied adhesive feet or the mounting holes can be used to permanently fix it to a surface.

For rack mount configurations, order an ICT-RMK1 2RU high rack tray and install the ICT12-14BP using the supplied hardware. A standard ICT Charger Series battery charger (not included) can also be mounted directly beside the battery pack to build a complete rack mounted DC UPS solution.

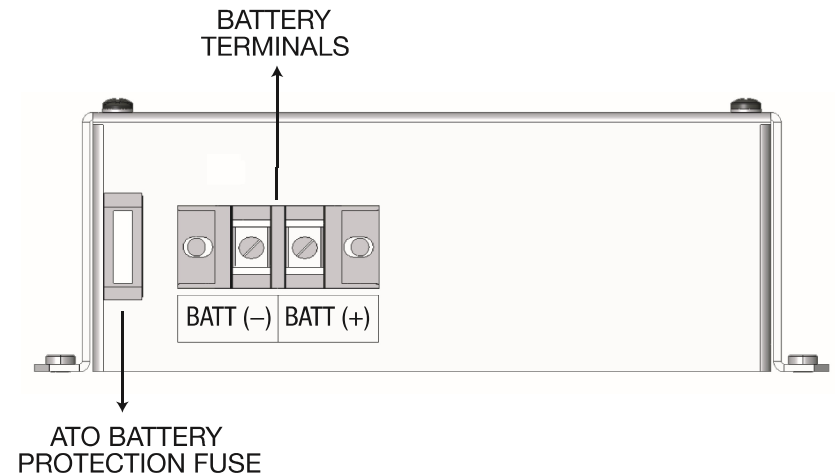
## WARNING

- ▶ Never charge a frozen battery.
- ▶ A periodic inspection of the batteries is recommended.

## SETUP

- ▶ Turn OFF the AC power on the battery charger or external load before connecting the DC UPS Battery Pack to it.
- ▶ Connect the battery terminals on back of the DC UPS Battery Pack to the battery terminals on the battery charger or external load while observing the correct polarity. Ensure that the wire used is suitable for the amount of current that will be consumed.
- ▶ Insert the enclosed 15A ATO fuse into the ATO fuse holder on the back of the DC UPS Battery Pack.
- ▶ Turn ON the battery charger or external load.

## CONNECTIONS



## SPECIFICATIONS

	ICT12-14BP	ICT24-7BP
Voltage:	12V	24V
AH Rating:	14.4AH	7.2AH
Fuse:	30A	30A
Weight:	15.5 lbs	15.5 lbs
Type:	Standalone	Standalone